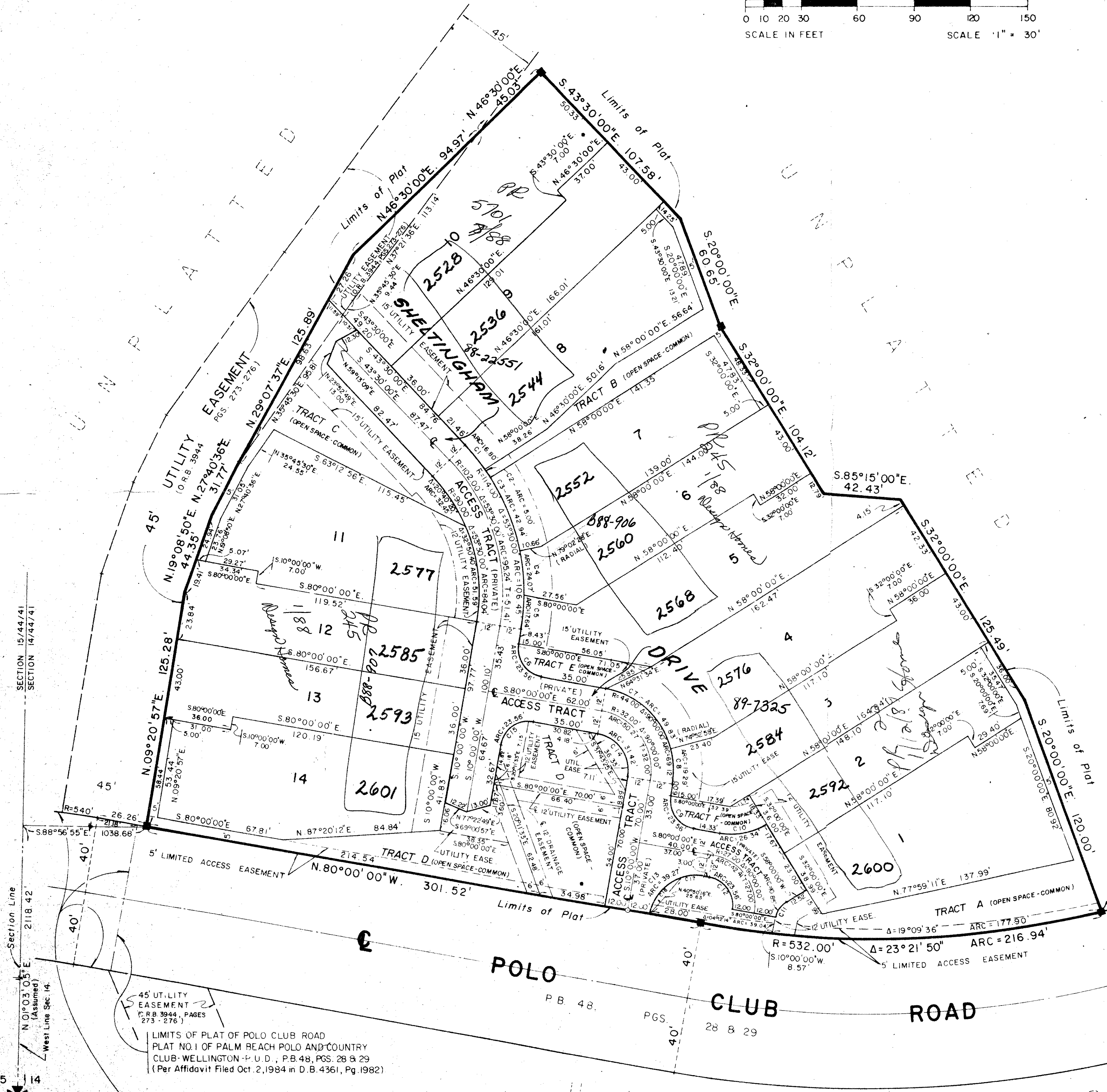
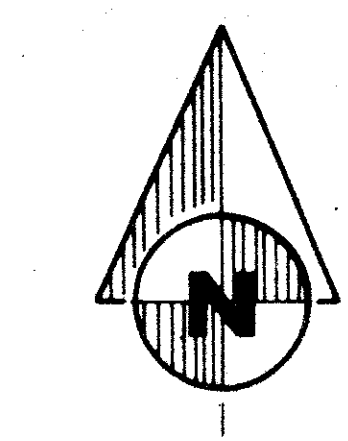
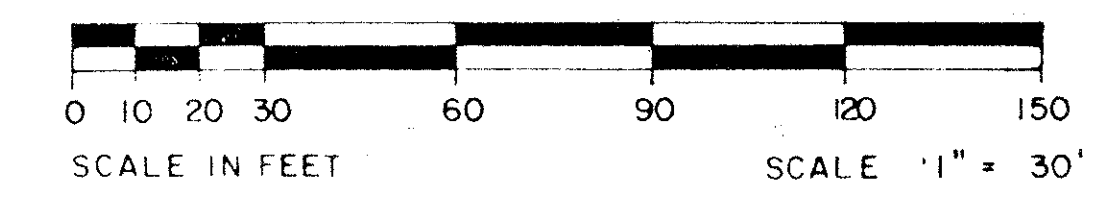


DRAWING NUMBER  
**52/177**

**177**

# WINDSOR WAY - PLAT NO. 2 OF PALM BEACH POLO AND COUNTRY CLUB - WELLINGTON - P.U.D. IN PART OF SECTION 14, TWP. 44 S., RGE. 41 E. PALM BEACH COUNTY, FLORIDA.

DATE: SEPT. 1985 SHEET 2 OF 2 SHEETS



**NOTES**

ALL BEARINGS SHOWN HEREON ARE RELATIVE TO AN ASSUMED BEARING OF NORTH 01°03'05" EAST ALONG THE WEST LINE OF SECTION 14, TOWNSHIP 44 SOUTH, RANGE 41 EAST.

BUILDING SETBACK LINES SHALL BE AS REQUIRED BY PALM BEACH COUNTY ZONING REGULATIONS.

NO BUILDING OR ANY KIND OF CONSTRUCTION SHALL BE PLACED ON UTILITY AND MAINTENANCE EASEMENTS.

NO STRUCTURES, TREES OR SHRUBS SHALL BE PLACED IN THE DRAINAGE AND MAINTENANCE EASEMENTS.

APPROVAL OF LANDSCAPING ON UTILITY EASEMENTS SHALL BE ONLY WITH THE APPROVAL OF ALL UTILITIES OCCUPYING SAME, INCLUDING WATER AND SEWER.

WHERE DRAINAGE EASEMENTS AND UTILITY EASEMENTS CROSS, DRAINAGE EASEMENTS SHALL TAKE PRECEDENCE.

■ DENOTES PERMANENT REFERENCE MONUMENT  
○ DENOTES PERMANENT CONTROL POINT

EASEMENTS ARE FOR PUBLIC UTILITIES, WATER AND SEWER, UNLESS OTHERWISE NOTED.

*10/04/41*

Windsor Way  
PAGE 177  
BLDG CODE A-1  
ROAD # 62  
PUD NAME Plat 2

DESIGNED BY [Signature]  
CHECKED BY [Signature]

**CURVE DATA**

NO	RADIUS	DELTA	ARC
C1	114.00'	08°26'39"	16.80'
C2	114.00'	02°30'52"	5.00'
C3	114.00'	21°34'57"	42.94'
C4	114.00'	12°05'41"	24.07'
C5	114.00'	08°51'51"	17.64'
C6	15.00'	90°00'00"	23.56'
C7	44.00'	64°52'59"	49.83'
C8	44.00'	25°07'01"	19.29'
C9	15.00'	90°00'00"	23.56'
C10	35.93'	42°00'00"	26.34'
C11	12.95'	48°00'00"	10.85'
C12	15.00'	90°00'00"	23.56'
C13	25.00'	90°00'00"	39.27'
C14	20.00'	90°00'00"	31.42'
C15	15.00'	90°00'00"	23.56'
C16	25.00'	61°40'31"	26.91'
C17	25.00'	28°19'29"	12.36'

**0332-021 52/177**  
**WINDOR WAY PLAT 2**

DRAWING NUMBER

DRAWING NUMBER

DRAWING NUMBER

LIMITS OF PLAT OF POLO CLUB ROAD  
PLAT NO. 1 OF PALM BEACH POLO AND COUNTRY CLUB - WELLINGTON - P.U.D., P.B. 48, PGS. 28 & 29  
(Per Affidavit Filed Oct. 2, 1984 in D.B. 4361, Pg. 1982)

MURFIELD PLAT NO. 1 OF PALM BEACH POLO & COUNTRY CLUB  
WELLINGTON - P.U.D., P.B. 48, PGS. 30 & 31

THIS INSTRUMENT WAS PREPARED BY:  
PAUL J. FOTORNY OF DAILEY-FOTORNY, INC.  
5050 TENTH AVENUE NORTH, SUITE B  
LAKE WORTH, FLORIDA 33463

**Dailey-Fotorny, inc.**  
land surveyors, planners, engineers  
5050 Tenth Ave. North - Lake Worth, Florida - 33463 Phone 305 965 8787

BROOKSIDE - PLAT NO. 1 OF PALM BEACH POLO & COUNTRY CLUB, WELLINGTON-P.U.D. P.B. 50, PGS. 175 & 176